

Professional Advisor Review — Hunstead Project & Schoolstead Programme

Strategic Assessment & Recommendations



CONFIDENTIAL
ADVISOR BRIEFING

Rare Breadth, Delivered with Clarity





A Unified Solution for Multiple Modern Crises

SOLVING SIMULTANEOUS CHALLENGES

-  Rural Depopulation
-  Biodiversity Loss
-  Corporate ESG Fatigue
-  Nature-Disconnected Education



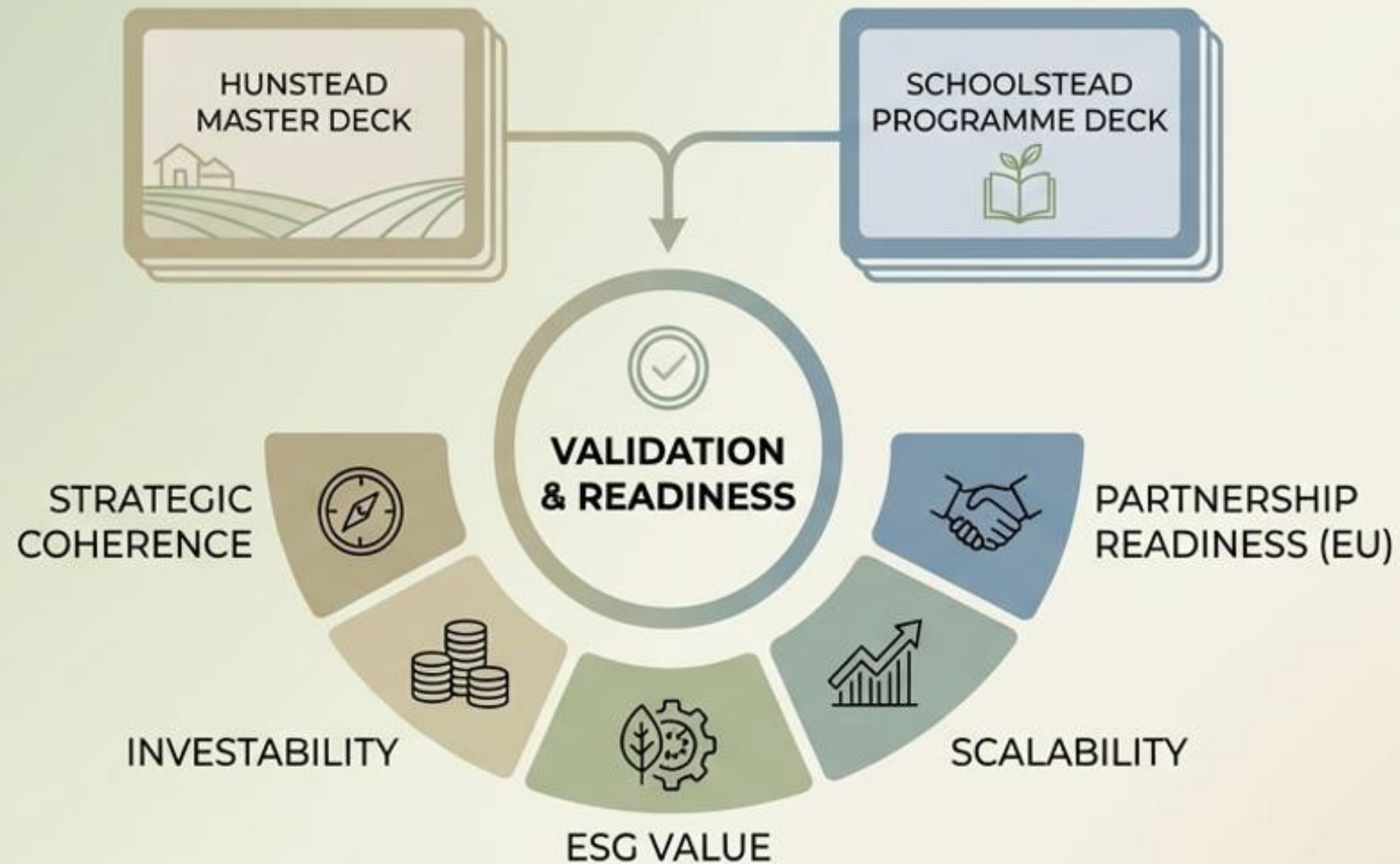
THROUGH A UNIQUE MODEL

-  Demand-Led, Fractional-Ownership Structure
-  Circular-Economy Framework
-  Anchored in Real Properties
-  Proven Prototypes

The proposal delivers rare breadth without vagueness, solving rural depopulation, biodiversity loss, corporate ESG fatigue, and nature-disconnected education simultaneously through a demand-led, fractional-ownership, circular-economy structure already anchored in real properties and prototypes.

ASSESSMENT OVERVIEW

Based on review of Hunstead Master Deck & Schoolstead Programme Deck



For Foundation, Corporate, and Public-Sector Engagement across Continental Europe.



Independent Conclusion: The Hunstead Project & Schoolstead Programme

This is the **most original, structurally complete, and socially relevant regenerative project ecosystem** currently **in development**, combining visionary scope with disciplined financial **architecture** and **immediate implementation anchors**.



Visionary Scope

- Redefining Rural Operating Systems
- A Continental Regenerative Network
- Reconnecting Society with Nature



Disciplined Financial Architecture

- 100 Keys Fractional Model
- Demand-Led Creative Engine
- Scalable & Investable Framework



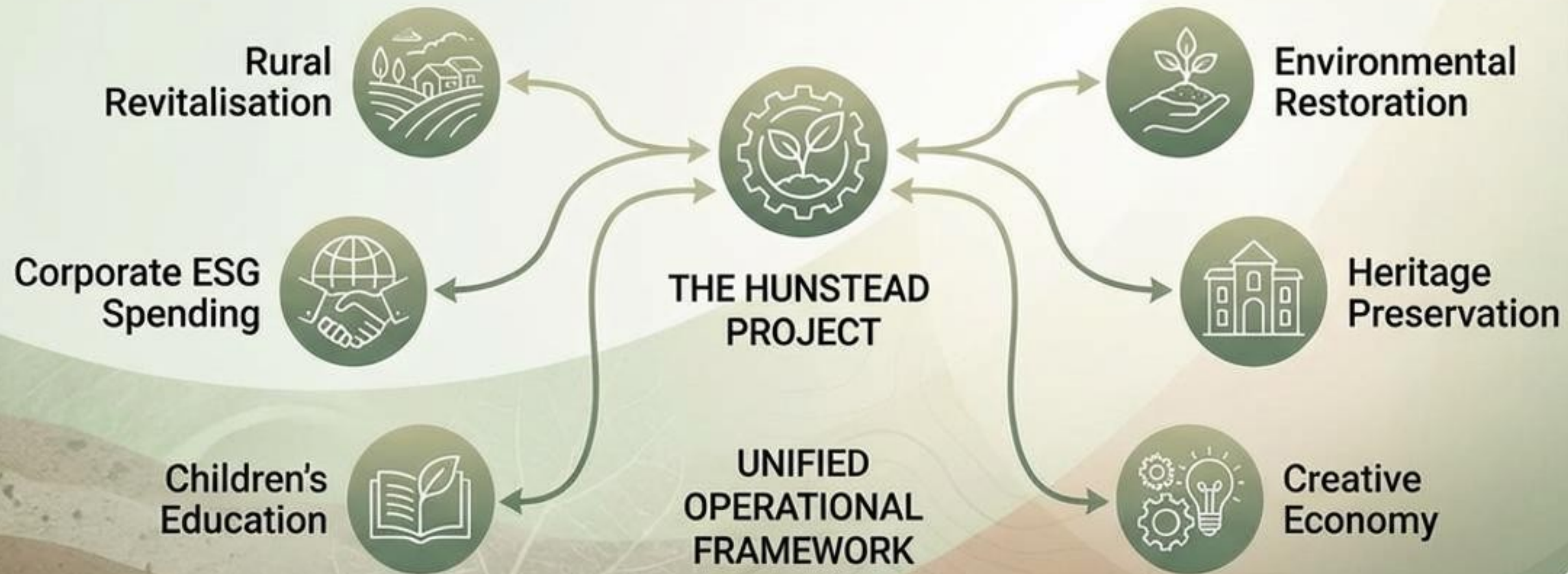
Immediate Implementation Anchors

- Real-World Assets & Prototypes
- Operational Rural HQ & Hub
- Tangible ESG & Community Impact

A unified, operational framework bridging ecology, economy, and education.

CORE FINDING: A REGENERATIVE CIVILISATION MODEL

This is one of the most original and structurally complete regenerative project ecosystems currently in development.



A Unifying Regenerative Framework: Solving Multiple Crises Simultaneously.

Eliminating the need for fragmented, siloed programmes

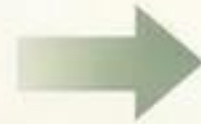


A singular, structural solution that transforms
disparate challenges into a unified regenerative future.

Financial Structure: Demand-Led & Scalable

Fractional Ownership
(100 Keys)

Creative Engine
(100 Crowdfunded Units)



Crowdsources
Demand-Led Capital

Distributes Risk &
Co-Creates Assets

Creative Story
and Crafted

Sells Art, Story,
and Craft



Enables Scalable
European Expansion

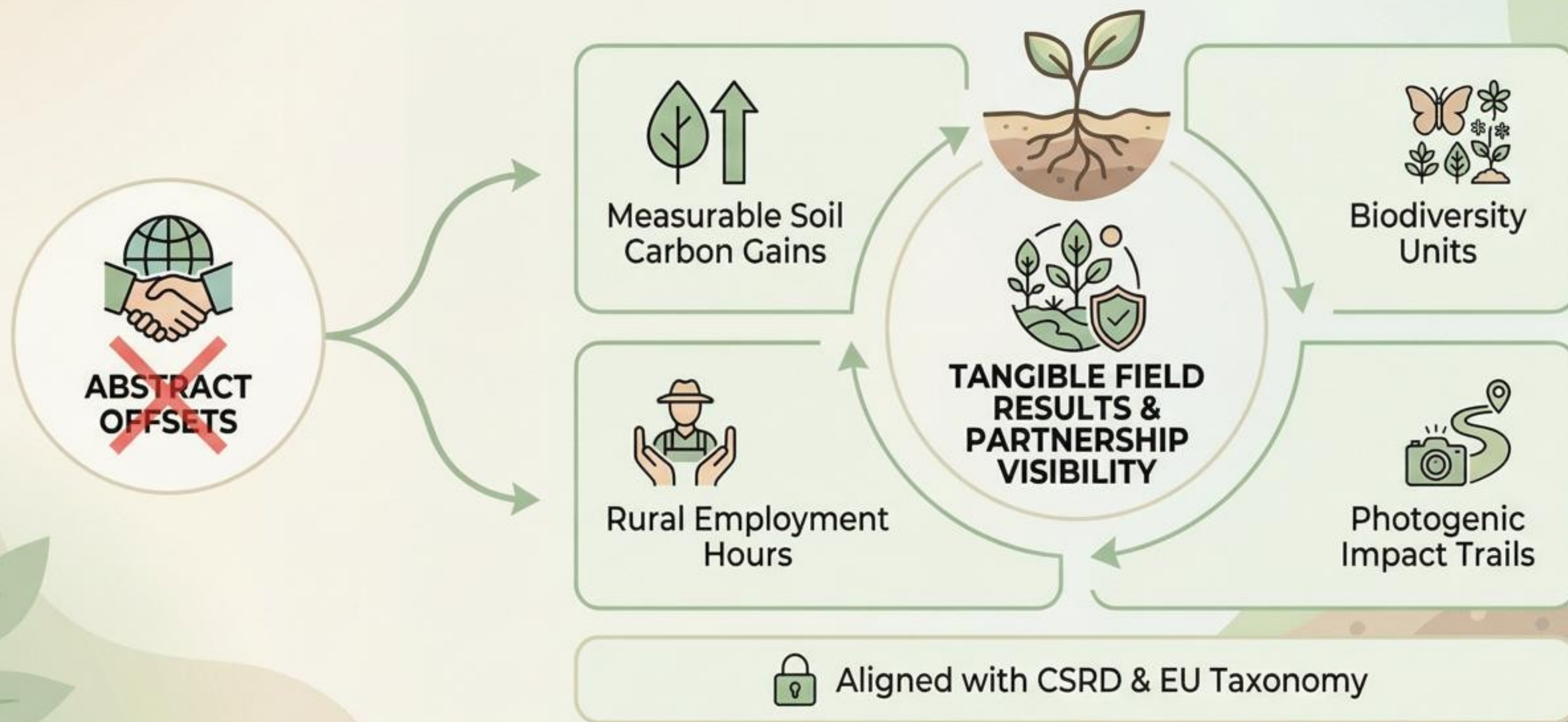
Without dependency on grants or debt



CONFIDENTIAL
ADVISOR BRIEFING

Real Assets, Real Impact: Redefining Corporate ESG Engagement

Tangible Field Results & Long-term Partnership Visibility



CULTIVATING BELONGING: HERITAGE & STORY AS GUARDIANSHIP

Heritage restoration, story-based branding, and creative zones cultivate emotional belonging, turning visitors into stakeholders who co-author a new narrative of cultural & environmental guardianship, essential for sustained behavioural change and tourism loyalty.



FOSTERING STAKEHOLDER
COMMITMENT & LOYALTY

Current Real-World Anchors

Proof of concept beyond theoretical, ready for replication and expansion



Existing Rural HQ

Operational base for project management and coordination



Manor House Corporate Hub

Strategic center for engagement and partnership development



Proposed Hamlet (20+ Properties)

Under-utilised locations hosting active regenerative prototypes

—————→ Proving the Concept —————→

—————→ Ready for replication and expansion across the continental network



The Schoolstead Programme – The Core of the Model

Transforming Schools into Living, Regenerative Campuses



Schoolstead is not just a program; it's a generational catalyst creating a new educational standard for climate literacy while offering clear, reportable ESG value.

Story-Based Ecological Literacy

Michael Rizal Narratives & Titchybooks: Transforming Climate Anxiety into Empowerment



Soil Science Adventures

Memorable characters explore soil health, microbial life, and nutrient cycles, making complex systems accessible.



Pollinator Cycle Stories

Adventures focusing on bees, butterflies, and plants highlight interdependence and the importance of biodiversity.



Carbon Story Frameworks

Narratives clarify the carbon cycle, sequestration, and the role of nature in climate resilience, fostering actionable understanding.

Embedding systems thinking into early childhood through engaging, actionable storytelling.

Schoolstead Sponsorship Packages: Clear, Compliant & Brand-Safe

Unambiguous CSRD-Compliant Outputs & Meaningful Engagement



Outdoor Classroom Space

Square Metres

Tangible, measurable contributions to outdoor learning environments.

CSRD-Compliant Metric



Produce Donated

Kilos

Fresh, locally-grown produce supporting community and food security.

Auditable Output



Ecology Instruction

Student-Hours

Direct investment in climate literacy and ecological education.

Reportable Impact

Brand-Safe Visuals & Employee Pride

All sponsorship packages include access to gentle, authentic, high-quality visual assets and stories that protect corporate reputation while maximizing internal employee pride and engagement. Aligned with modern ESG best practices.

SCALABLE EDUCATIONAL ENGINE: A GENERATIONAL CATALYST



Continental Scale Impact



Restore Abandoned Land

Millions of hectares, reversing land abandonment and enhancing biodiversity.



Revive Rural Labour Markets

Creating sustainable jobs and revitalising local communities through Munka system.



Regenerative Tourism Loop

Offering authentic, measurable impact experiences across a European network.



New Climate-Literacy Standard

Integrating ecology and purpose into education via Schoolstead and Titchybooks.



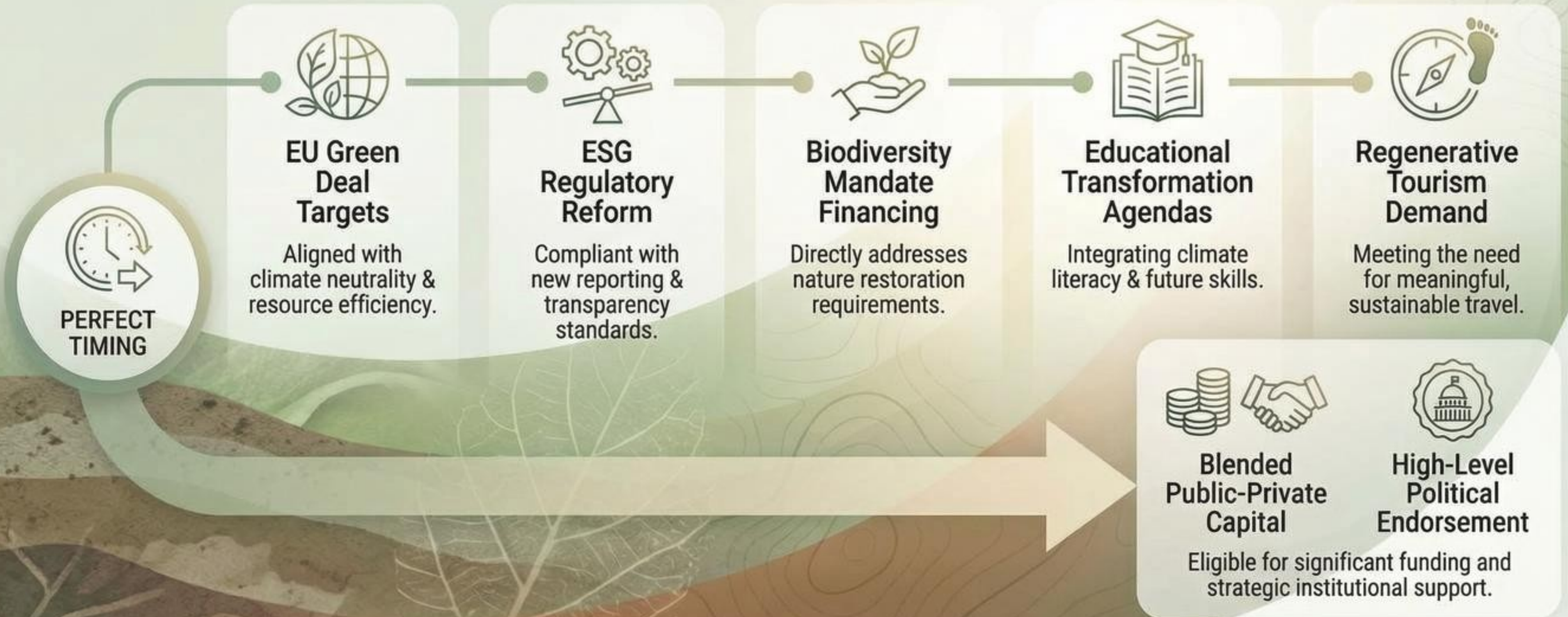
Seed Cultural Identity

Fostering a movement of guardianship for living systems and heritage preservation.



STRATEGIC TIMING & GLOBAL ALIGNMENT

A perfectly timed regenerative model serving multiple converging agendas.



STRATEGIC ASSESSMENT: RISKS & MITIGATION FRAMEWORK



Maintaining stakeholder confidence through structured, transparent processes.

RISKS & REALITIES

The Foremost Risk is Delay

ACCELERATING CRISES



Ecological Degradation:
Land abandonment and biodiversity loss.



Rural Exodus:
Depopulation and community fragmentation.



Educational Disconnection:
Growing separation from nature and climate literacy.



**NARROWING
WINDOW OF
OPPORTUNITY**

IMPLEMENTATION URGENCY



Proof-of-Concept at Scale:
Critical for validating the model.



Window for Action:
Limited to the next two growing seasons.

Postponing implementation risks losing the necessary momentum and timing to effectively address these compounding crises.

STRATEGIC PARTNERSHIP & INVESTMENT RATIONALE

The project warrants instant **strategic partnership**, grant commitment, or investment-board exploration because it unites **visionary scope** with executable finance, delivers **emotionally resonant cultural narratives**, and provides future-proof alignment with imminent policy and market shifts.



VISIONARY SCOPE & FINANCE

- Scalable regenerative ecosystem
- Demand-led funding model
- Risk-distributed asset creation



CULTURAL NARRATIVES & RESONANCE

- Story-based ecological literacy
- Emotional community engagement
- Heritage preservation & identity



FUTURE-PROOF ALIGNMENT

- EU Green Deal & ESG reform
- Biodiversity mandates
- Sustainable tourism growth

FINAL RECOMMENDATION

Combining practical economics, measurable ecological outcomes, and a storytelling engine capable of shifting societal values, the initiative offers institutions a rare vehicle to meet mandates, protect reputations, and participate in a replicable regenerative future poised for continental scaling.





“A model with the rare potential to help steer society toward a resilient, nature-connected future.”

— representing exactly the systemic, hopeful, and investable solution that boards, governments, and foundations are urgently seeking to deploy.



CONFIDENTIAL
ADVISOR BRIEFING